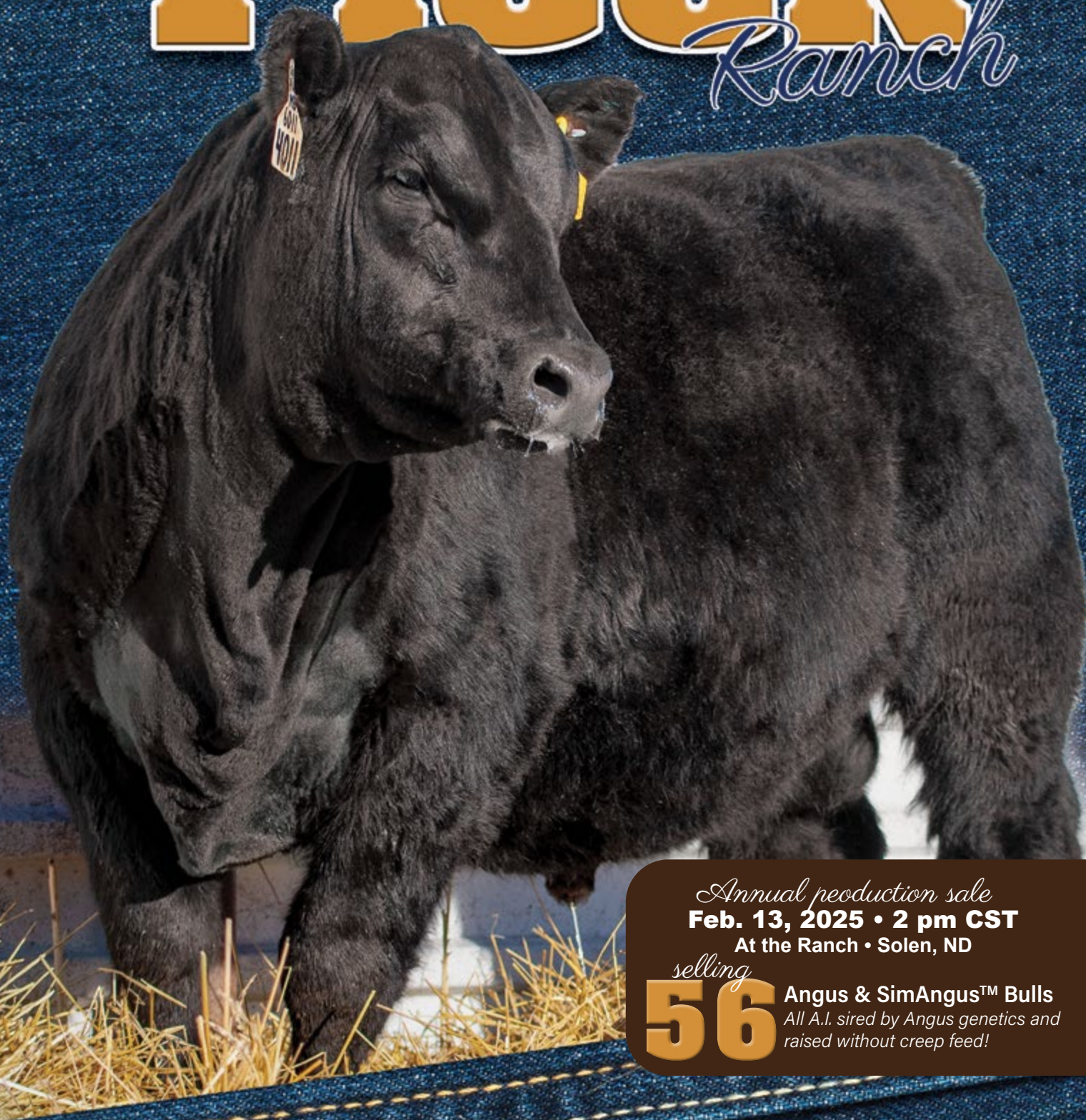


2/13/2025

Fleck

Ranch



Annual production sale
Feb. 13, 2025 • 2 pm CST
At the Ranch • Solen, ND

selling

56

Angus & SimAngus™ Bulls
All A.I. sired by Angus genetics and
raised without creep feed!

Fleck *Ranch*

Welcome to our 14th Annual Production Sale! Thank you all for your support in our program over the last 14 years. The bulls we have to offer this year are again all AI sired or embryo transplant calves from some of the top AI sires in the Angus industry. All these young bulls we offer at our sale were born and raised on our ranch.

The sires we select are based on their ability to put pounds on your feeder cattle and maternal qualities into your replacement heifers. The mothers of these young sires are selected for their ability to consistently wean off top-producing calves.

This year, roughly two thirds of the bulls for sale are registered Angus. Including several sets of flush brothers out of a couple of our own elite, home raised, donor cows. The other half are either purebred Angus bulls but not registerable, or SimAngus bulls.

All bulls will have their adjusted weaning and yearling weights listed. Along with that, the registered bulls will have their registration number, their current EPD's, and lineage lines. The non-registerable Angus and crossbred bulls will have sire history above their weights. In the top right-hand corner of each lot, it will tell you if they are registered Angus (registration number), purebred Angus but not registered (PB Angus), or on the SimAngus bulls it will show what percentage is Angus (3/4 or 7/8 Angus).

All the registered bulls had blood pulled and were Geneseek tested, which parentage verifies each bull and makes sure they are free of any genetic defects listed by the American Angus Association. It updates and genomically enhances all their EPD's as if they have already had several offspring.

Registered Angus does not mean these bulls are any better or any worse than the crossbred bulls. It is up to each and every cattleman what their preference is based on breed, looks, and performance data available.

We look forward to seeing you this year at our 14th Annual Production Sale on Thursday, February 13, 2025! Please call with any questions or stop in anytime to check the bulls out. The coffee is always on!



Fleck Ranch

Video Auction Bull Sale
Thursday, Feb. 13, 2025 • 2 pm CST
At the Fleck Ranch,
7 Miles South of St. Anthony, N.D.

Sale Day Contacts:

Les Fleck, ranch (701) 445-7459
Les Fleck, cell (701) 391-5577
Aaron Fleck, ranch (701) 445-7455
Aaron Fleck, cell (701) 391-3557
Summer Fleck, cell (701) 319-8022

Auctioneer: Ross Glass, Hebron

Office (701) 878-4001
Cell (701) 290-4001

Directions to the ranch:

From St. Anthony, travel south on Highway 6 for 7 miles. The ranch is on the East side of the road.

From Flasher, travel east on Highway 21 and 6 for 20 miles. The ranch is on the East side of the road.

Terms: Please settle for the cattle sale day.

Phone Bidding: If you are unable to attend the sale and wish to be on the phone during the sale, please call Aaron, Les or Summer in advance to make arrangements.

Viewing the bulls: Cattle can be viewed at the Ranch anytime prior to the sale. Please call us to make arrangements.

Video Sale Details: This is our third year of going to the new video format sale. The bulls, as always, will be available to be viewed in the same pens right outside the barn where they were born. We will have several big screen TV's setup in the barn where you will be able to view a video of each bull as they are being bid upon. We are also going to

have DV Auction at the sale again. If you cannot attend the sale for some reason, whether it is the weather or whatever the matter, you can register and watch the sale and bid online.

Feeding & Delivery: We will keep all bulls free of charge until May 1. We offer free delivery for the first 500 miles. Arrangements will be made for deliveries over 500 miles. They will be delivered semen-tested and structurally sound.

Health: All bulls have been on a complete health program as prescribed by Dr. Nadine Tedford of the Sheridan Animal Hospital, McClusky, N.D.

Lunch: Please join us for lunch before the sale.

Catalog & ads designed by *Strommen Livestock Services*, Solen, N.D. (701) 290-3886

DVAuction *Broadcasting Real-Time Auctions*

**On-site and
Online Bidding
Available**

Can't make the sale? **Bid from home with DV Auction's "real-time" internet bidding service!** Buying online is as easy as 1, 2, 3...

1. Create an account at www.dvauction.com under the "register" tab.
2. Apply for bidding approval by clicking on the "details" tab at least 24 hours prior to the auction - a DV representative will notify you when you are approved.
3. Tune in for the sale and make your purchases!

After the sale, contact Aaron or Les to arrange transportation and payment. High speed internet is required for successful bidding - be sure to check the lag-time monitor in the top left corner to ensure real-time broadcasts.

Proxy Bidding: If you can't make time to watch the sale, register a proxy bid and DVAuction represent your bid while you're away. Look for the "proxy bid" tab on the auction listing and fill in your maximum bids. They'll handle the rest!

Having troubles? During the auction, you can type a message to the operator at any time for assistance. DVAuction support can always be reached at (402) 474-5557.



FLECK'S BLACK ANNIE 5065

BD: 03/16/2015

Reg #: 18430037

VERMILION PAYWEIGHT J847
BASIN PAYWEIGHT 107S
BASIN LUCY 3829

CONNEALY ONWARD
PINE COULEE BLACK ANNIE U7
WAR HILL BLACKBONE ANNIE

VERMILION DATELINE 7078
VERMILION LASS 7969
C A FUTURE DIRECTION 5321
BASIN LUCY 178E
CONNEALY LEAD ON
ALTUNE OF CONANGA 6104
G A R EXPECTATION 4915
V T 6807 TRAVELER S32

EPDs								\$Values	
CE	BW	WW	YW	Milk	Marb	REA	Fat	\$W	\$B
2	3.2	77	130	20	0.33	0.67	-0.010	60	155

The Black Annie cow family is the foundation of our Angus program, and 5065 is the cream of the crop. She is thick, deep, and long bodied with a beautiful udder. The docility of the Black Annie cow family is unmatched. Her offspring are long and powerful. True breeding pieces. We can breed or flush her to any sire, and she never misses. She has 4 outstanding sets of flush brothers in the sale. She is the dam of Lots 2-3, 24-29, and 39-40. She is also the grand dam of Lots 4-6. We recently sold embryos from a flush of her for \$1,000 a piece to Hauge's Blue Hill Ranch of Carson, ND

10 PERFORMANCE SONS SELL

Matriarch of **Fleck** *Ranch*



LC



LAR MAN IN BLACK

BD: 1/27/20

Reg #: 19955191

#CONNEALY BLACK GRANITE
#**BAR R JET BLACK 5063**
BAR R IRIS ANITA 0113

#SITZ TOP GAME 561X
#**JMB MAXINE TG 2131**
#JMB MAXINE DELUXE 9034

#CONNEALY CONSENSUS 7229
#EURA ELGA OF CONANGA 9109
#SITZ UPWARD 307R
BAR R ANITA 7081
#GDAR GAME DAY 449
#SITZ PRIDE 88T
#STEVENSON CE DELUXE 1914
JMB MAXINE 720

EPDs								\$Values	
CE	BW	WW	YW	Milk	Marb	REA	Fat	\$W	\$B
8	2.8	93	160	23	1.06	0.86	0.052	76	206

A man amongst boys from a young age, combining tremendous base width and muscle with exceptional substance, rib shape, and length of body. He is described by many astute cattlemen as the most powerful Angus bull they have seen in recent years. His recent progeny have been tearing up the sales. The sons we have in this year's sale from him are exceptional and the daughters may be even better.



FR REGULATOR 1129

BD: 03/12/21

Reg #: 20226064

#MOGCK BULLSEYE
#**HOOVER NO DOUBT**
MISS BLACKCAP ELLSTON J2

#BASIN PAYWEIGHT 107S
#**FLECK'S BLACK ANNIE 5065**
PINE COULEE BLACK ANNIE U7

#MOGCK SURE SHOT
MOGCK MARY 1255
#SYDGEN C C & 7
#MISS BLACKCAP ELLSTON D154
#VERMILION PAYWEIGHT J847
BASIN LUCY 3829
#CONNEALY ONWARD
WAR HILL BLACKBONE ANNIE

EPDs								\$Values	
CE	BW	WW	YW	Milk	Marb	REA	Fat	\$W	\$B
-1	4.0	79	141	16	1.10	.72	0.019	55	207

Regulator is our own home raised sire that is currently having his semen collected at World West Sires in Joliet, Montana. He is a No Doubt son out of our superstar donor dam, Black Annie 5065. Regulator is a true beef bull with tremendous volume and length. He is a very good footed, large scrotal bull. It is really hard to find a bull with his amount of muscle and mass that is also a high-quality carcass bull. He carries the Certified Angus Beef stamp for carcass quality. He is also super docile. We hope to have him back for sale day for people to look at, as we will be selling semen from him this year and will have several offspring of him in next year's production sale.



S A V AMERICA 8018

BD: 1/31/2018

Reg #: 19249580

#COLEMAN CHARLO 0256
#**S A V PRESIDENT 6847**
S A V BLACKCAP MAY 4136

#S A F 598 BANDO 5175
#**S A V MADAME PRIDE 0075**
S A V MADAME PRIDE 8264

#O C C PAXTON 730P
BOHI ABIGALE 6014
#S A V 8180 TRAVELER 004
#S A V MAY 2397
#BON VIEW BANDO 598
S A F ROYAL LASS 1002
#LEACHMAN RIGHT TIME
#S A R CRUZS PRIDE 8597

EPDs								\$Values	
CE	BW	WW	YW	Milk	Marb	REA	Fat	\$W	\$B
1	4.6	80	135	21	0.43	0.83	0.009	59	135

America is the world record selling bull from Schaff's Angus Valley in 2019. He is a "one of a kind" breeding piece, resulting from the last embryo produced out of the legendary SAV Madame Pride 0075. 0075 was a maternal powerhouse, producing in Kelly's herd until she was 20 years old. America combines scale crushing power and maternal excellence in one package.



D

D SAV GLORY DAYS 1832

BD: 12/28/2020 • Reg #: 20161297

#S A V PRESIDENT 6847
S A V AMERICA 8018
S A V MADAME PRIDE 0075

#S A V PRIORITY 7283
#S A V MADAME PRIDE 3145
S A V MADAME PRIDE 1171

#COLEMAN CHARLO 0256
S A V BLACKCAP MAY 4136
#S A F 598 BANDO 5175
S A V MADAME PRIDE 8264
#S A V FINAL ANSWER 0035
#S A V BLACKCAP MAY 5530
#S A V 707 RITO 9969
S A V MADAME PRIDE 4466

EPDs								\$Values	
CE	BW	WW	YW	Milk	Marb	REA	Fat	\$W	\$B
0	5.5	83	147	20	71	0.34	0.89	52	174

Glory Days is a true power bull. He presents a massive performance design with capacity, thickness, muscle, and superb structure. The progeny of Glory Days are performance standouts with massive dimension, volume, and added rip-shape.



E

E SAV SCALE HOUSE 0845

BD: 12/13/2019 • Reg #: 20000000

#SITZ UPWARD 307R
MARCYS SCALE CRUSHER
#MARCYS ERICA 393

RITO 707 OF IDEAL 3407 7075
S A V BLACKCAP MAY 1416
S A V BLACKCAP MAY 4136

#CONNEALY ONWARD
SITZ HENRIETTA PRIDE 81M
#LEACHMAN RIGHT TIME
G MARCY ERICA 118
#R R RITO 707
IDEAL 3407 OF 1418 076
#S A V 8180 TRAVELER 004
S A V MAY 2397

EPDs								\$Values	
CE	BW	WW	YW	Milk	Marb	REA	Fat	\$W	\$B
5	2.1	80	144	18	0.22	0.82	-0.030	62	153

Scale House was the high selling bull in the 2021 SAV Sale. Commanding \$275,000. He is a moderate birthweight sire with explosive growth numbers. Scale House's progeny offer excellent growth with great eye appeal.



F

F BALDRIDGE FLAGSTONE F411

BD: 05/09/2018 • Reg #: 19478642

#MOGCK BULLSEYE
HOOVER NO DOUBT
MISS BLACKCAP ELLSTON J2

#STYLES UPGRADE J59
BALDRIDGE ISABEL Y69
BALDRIDGE ISABEL T935

#MOGCK SURE SHOT
MOGCK MARY 1255
#SYDGEN C C & 7
#MISS BLACKCAP ELLSTON D154
#SITZ UPWARD 307R
PLAINVIEW LASSIE 71B
#BALDRIDGE KABOOM K243 KCF
BALDRIDGE ISABEL P4527

EPDs								\$Values	
CE	BW	WW	YW	Milk	Marb	REA	Fat	\$W	\$B
-3	3.7	70	126	20	0.84	0.77	-0.020	53	178

Flagstone is a No Doubt son by the legendary dam, Baldrige Isabel Y69. Flagstone is wide based with super feet. He has lots of eye appeal and is packed with meat and muscle. Highly maternal bull along with high carcass quality as well.



G

G SAV EASE 0840

BD: 12/09/2019 • Reg #: 19852839

#SITZ UPWARD 307R
MARCYS SCALE CRUSHER
#MARCYS ERICA 393

RITO 707 OF IDEAL 3407 7075
S A V BLACKCAP MAY 1416
S A V BLACKCAP MAY 4136

#CONNEALY ONWARD
SITZ HENRIETTA PRIDE 81M
#LEACHMAN RIGHT TIME
G MARCY ERICA 118
#R R RITO 707
IDEAL 3407 OF 1418 076
#S A V 8180 TRAVELER 004
#S A V MAY 2397

EPDs								\$Values	
CE	BW	WW	YW	Milk	Marb	REA	Fat	\$W	\$B
4	0.5	75	135	18	-0.08	1.22	-0.056	62	146

Ease is a very moderate birthweight sire that we have used on our heifers the last two years with good results. He was a sale day favorite at the 2021 SAV sale. We used him for calving ease and added muscle dimension and to add length to his offspring.



Lot 1 • FR Tuxedo 4367

FR TUXEDO 4367

BD: 03/12/24

Reg #: 21113767

#BAR R JET BLACK 5063

#CONNEALY BLACK GRANITE

LAR MAN IN BLACK

BAR R IRIS ANITA 0113

#JMB MAXINE TG 2131

#SITZ TOP GAME 561X

S A V AMERICA 8018

#JMB MAXINE DELUXE 9034

FR MISS AMERICA 0267

#S A V PRESIDENT 6847

IRON MTN ELGA ERICA E267

S A V MADAME PRIDE 0075

#S A V RESOURCE 1441

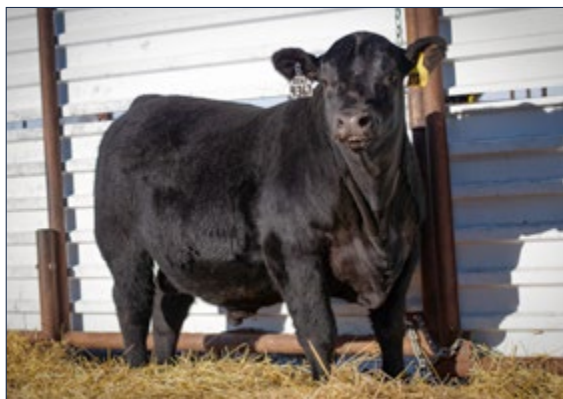
IRON MTN ELGA B114

ANGUS
Powered by Neogen GenesSeek

CED	3
BW	3.6
WW	93
YW	165
Milk	28
SW	79
SB	183
SC	293

BW	Adj WW	Adj. 365	ADG	Scrotal
89	785	1478	4.27	40

Tuxedo is an impressive individual from all angles. Generated from a flush of Man In Black to one of our new superstar donor cows, Miss America 0267. Miss America is a moderate framed, broody powerhouse. She is also the dam of our outstanding Lot 18 bull. Tuxedo is as fancy and square built, with as much muscle expression as you can get in a yearling bull. Excellent growth EPD's, top 3% in the breed. Top tier in the herd for WW and YW. Over 4-pound ADG. Large scrotal bull. He also carries the Certified Angus Beef logo for being a high carcass bull. Retaining 1/3 semen interest.



Miss America 0267 • Dam of Lots 1 and 18



Certain bulls in this offering meet the genetic requirements of the Certified Angus Beef brand. Those that do will bear this logo.

Minimum Genetic Requirements

Marbling EPD (Marb)	+0.65
Dollar Grid Carcass Index (\$G)	+55.0



Lot 3 • Flecks Big Man 2 4003

2

FLECK'S BIG MAN 4002

BD: 03/07/24

Reg #: 21104061

#BAR R JET BLACK 5063

LAR MAN IN BLACK

#JMB MAXINE TG 2131

#BASIN PAYWEIGHT 107S

FLECK'S BLACK ANNIE 5065

PINE COULEE BLACK ANNIE U7

#CONNEALY BLACK GRANITE

BAR R IRIS ANITA 0113

#SITZ TOP GAME 561X

#JMB MAXINE DELUXE 9034

#VERMILION PAYWEIGHT J847

BASIN LUCY 3829

#CONNEALY ONWARD

WAR HILL BLACKBONE ANNIE

ANGUS
Powered by Neogen GeneSeek

CED	7
BW	3.1
WW	91
YW	155
Milk	20
SW	68
SB	161
SC	254

BW	Adj WW	Adj. 365	ADG	Scrotal
98	831	1455	3.85	36

A top herd prospect by Man In Black out of our top donor, Flecks Black Annie 5065, who produces beautiful females and top end bulls.

3

FLECK'S BIG MAN 2 4003

BD: 03/12/24

Reg #: 21104069

#BAR R JET BLACK 5063

LAR MAN IN BLACK

#JMB MAXINE TG 2131

#BASIN PAYWEIGHT 107S

FLECK'S BLACK ANNIE 5065

PINE COULEE BLACK ANNIE U7

#CONNEALY BLACK GRANITE

BAR R IRIS ANITA 0113

#SITZ TOP GAME 561X

#JMB MAXINE DELUXE 9034

#VERMILION PAYWEIGHT J847

BASIN LUCY 3829

#CONNEALY ONWARD

WAR HILL BLACKBONE ANNIE

ANGUS
Powered by Neogen GeneSeek

CED	-4
BW	4.9
WW	101
YW	165
Milk	24
SW	80
SB	182
SC	303

BW	Adj WW	Adj. 365	ADG	Scrotal
101	859	1483	4.01	37

Another top performance son of Man In Black by 5065. These Man In Black offspring are true performance cattle.



Fleck's Black Annie 5065 • Dam of Lots 2-3



Lot 4 • Flecks MB 8065-4014

4

FLECKS MB 8065-4014

ANGUSGS
Powered by Neogen GeneSeek

BD: 03/10/24

Reg #: 21106817

#BAR R JET BLACK 5063
LAR MAN IN BLACK
#JMB MAXINE TG 2131

#HA COWBOY UP 5405
FLECKS CU BLACK ANNIE 8065
FLECK'S BLACK ANNIE 5065

#CONNEALY BLACK GRANITE
BAR R IRIS ANITA 0113
#SITZ TOP GAME 561X
#JMB MAXINE DELUXE 9034
HA OUTSIDE 3008
#HA BLACKCAP LADY 1602
#BASIN PAYWEIGHT 107S
PINE COULEE BLACK ANNIE U7

CED	-5
BW	6.3
WW	115
YW	201
Milk	18
SW	69
SB	180
SC	261

BW	Adj WW	Adj. 365	ADG	Scrotal
98	821	1476	4.04	37

Take a look at this bull's massive body, depth of rib, and length. Soggy from end-to-end. This bull "wows" every time I look at him.

5

FLECKS MB 8065- 4012

ANGUSGS
Powered by Neogen GeneSeek

BD: 03/12/24

Reg #: 21104077

#BAR R JET BLACK 5063
LAR MAN IN BLACK
#JMB MAXINE TG 2131

#HA COWBOY UP 5405
FLECKS CU BLACK ANNIE 8065
FLECK'S BLACK ANNIE 5065

#CONNEALY BLACK GRANITE
BAR R IRIS ANITA 0113
#SITZ TOP GAME 561X
#JMB MAXINE DELUXE 9034
HA OUTSIDE 3008
#HA BLACKCAP LADY 1602
#BASIN PAYWEIGHT 107S
PINE COULEE BLACK ANNIE U7

CED	2
BW	2.8
WW	83
YW	139
Milk	21
SW	71
SB	150
SC	270

BW	Adj WW	Adj. 365	ADG	Scrotal
94	705	1382	4.18	39

Another Man In Black out of our massive bodied cow, 8065. When you look at 8065, you will see where these sons get their mass. Big rib, long bodied, all in a moderate framed bull.



6

FLECKS MB 8065-4013

ANGUSGS
Powered by Neogen GeneSeek

BD: 03/10/24

Reg #: 21106819

#BAR R JET BLACK 5063
LAR MAN IN BLACK
#JMB MAXINE TG 2131

#HA COWBOY UP 5405
FLECKS CU BLACK ANNIE 8065
FLECK'S BLACK ANNIE 5065

#CONNEALY BLACK GRANITE
BAR R IRIS ANITA 0113
#SITZ TOP GAME 561X
#JMB MAXINE DELUXE 9034
HA OUTSIDE 3008
#HA BLACKCAP LADY 1602
#BASIN PAYWEIGHT 107S
PINE COULEE BLACK ANNIE U7

CED	2
BW	3.5
WW	88
YW	147
Milk	19
SW	67
SB	149
SC	246

BW	Adj WW	Adj. 365	ADG	Scrotal
81	693	1276	3.59	33

A moderate Man In Black son with a smaller birth weight. Still out of our massive bodied cow, 8065. The power is bred into this bull.



Flecks CU Black Annie 8065 • Dam of Lots 4-6



Lot 7 • FR Man In Black 4011

7 FR MAN IN BLACK 4011

BD: 03/16/24

Reg #: 21102147

#BAR R JET BLACK 5063
LAR MAN IN BLACK
#JMB MAXINE TG 2131

#BASIN PAYWEIGHT 107S
FLECKS BLACK JANIE U7 6011
PINE COULEE BLACK ANNIE U7

#CONNEALY BLACK GRANITE
BAR R IRIS ANITA 0113
#SITZ TOP GAME 561X
#JMB MAXINE DELUXE 9034
#VERMILION PAYWEIGHT J847
BASIN LUCY 3829
#CONNEALY ONWARD
WAR HILL BLACKBONE ANNIE

ANGUS
Powered by Neogen GenesSeek

CED	8
BW	3.4
WW	86
YW	147
Milk	25
SW	69
SB	175
SC	262

BW	Adj WW	Adj. 365	ADG	Scrotal
92	792	1357	3.49	40

Summer's stellar bull calf out of her Black Janie 6011 cow. Black Janie is a flush sister to our prolific Black Annie 5065 cow, who has 10 sons in this year's sale and numerous daughters in production in our herd. This guy is a powerful dude, with as much rib dimension as you can get in a bull. Large scrotal bull. Top 10% in the Angus breed for WW and YW. He is also pictured on the cover.

9 FLECKS 9055-4016

BD: 03/12/24

Reg #: 21104079

#BAR R JET BLACK 5063
LAR MAN IN BLACK
#JMB MAXINE TG 2131

#S A V PRESIDENT 6847
FLECKS BLK ANNIE PRES 9055
FLECK'S BLACK ANNIE 5055

#CONNEALY BLACK GRANITE
BAR R IRIS ANITA 0113
#SITZ TOP GAME 561X
#JMB MAXINE DELUXE 9034
#COLEMAN CHARLO 0256
S A V BLACKCAP MAY 4136
#BASIN PAYWEIGHT 107S
PINE COULEE BLACK ANNIE U7

ANGUS
Powered by Neogen GenesSeek

CED	5
BW	2.8
WW	82
YW	127
Milk	23
SW	75
SB	148
SC	253

BW	Adj WW	Adj. 365	ADG	Scrotal
95	665	1230	3.49	36

Our 9055 cow is a beautiful daughter of Flecks Black Annie 5055 by President. 9055 is a donor dam at our ranch and her Lot 9 bull is as balanced from front to rear as you will find. He will make a herd sire for the future. I really like this Man In Black son. Use him with confidence.



8 FLECKS MB 1055-4017

BD: 03/14/24

Reg #: 21104080

#BAR R JET BLACK 5063
LAR MAN IN BLACK
#JMB MAXINE TG 2131

#HF TIGER 5T
FLECKSBLKANNIETIG9055-1055
FLECKS BLK ANNIE PRES 9055

#CONNEALY BLACK GRANITE
BAR R IRIS ANITA 0113
#SITZ TOP GAME 561X
#JMB MAXINE DELUXE 9034
HF KODIAK 5R
HF ECHO 84R
#S A V PRESIDENT 6847
FLECK'S BLACK ANNIE 5055

ANGUS
Powered by Neogen GenesSeek

CED	5
BW	2.6
WW	74
YW	116
Milk	28
SW	74
SB	158
SC	274

BW	Adj WW	Adj. 365	ADG	Scrotal
88	739	1368	3.88	38

A Man In Black son out of an easy-doing Tiger daughter. These Tiger bred females are problem free. Their dispositions are excellent, their bred back on time, and very good mamas. Love every one of these kinds of cows. Plus, they perform.



Flecks BLK Annie Pres 9055 • Dam of Lot 9



Lot 10 • FR Man In Black 4329



FR Queen Dolly 9329 • Dam of Lots 10-12

10 FR MAN IN BLACK 4329

BD: 03/12/24

Reg #: 21105321

#BAR R JET BLACK 5063
LAR MAN IN BLACK
#JMB MAXINE TG 2131

#BRUNS BLASTER
FR QUEEN DOLLY 9329
DIAMOND J QUEEN DOLLY 6329

#CONNEALY BLACK GRANITE
BAR R IRIS ANITA 0113
#SITZ TOP GAME 561X
#JMB MAXINE DELUXE 9034
#MOGCK BULLSEYE
BALDRIDGE BLACKBIRD 11 BAF
HOOVER EXPLORER
#DIAMOND J QUEEN DOLLY 467

ANGUSGS
Powered by Neogen GenesSeek

CED	-6
BW	6.7
WW	94
YW	167
Milk	31
\$W	69
\$B	207
\$C	332

BW	Adj WW	Adj. 365	ADG	Scrotal
108	777	1338	3.46	38

A trio of excellent flush brothers by Man In Black mated to our very best Bruns Blaster daughter, Queen Dolly 9329. She is a powerhouse cow with weaning and yearling EPD's in the top 1% of the Angus breed. Along with a +31 Milk EPD. These sons all carry top tier growth and maternal characteristics to be passed on to their offspring.



11 FR MAN IN BLACK 4429

BD: 03/19/24

Reg #: 21105323

#BAR R JET BLACK 5063
LAR MAN IN BLACK
#JMB MAXINE TG 2131

#BRUNS BLASTER
FR QUEEN DOLLY 9329
DIAMOND J QUEEN DOLLY 6329

#CONNEALY BLACK GRANITE
BAR R IRIS ANITA 0113
#SITZ TOP GAME 561X
#JMB MAXINE DELUXE 9034
#MOGCK BULLSEYE
BALDRIDGE BLACKBIRD 11 BAF
HOOVER EXPLORER
#DIAMOND J QUEEN DOLLY 467

ANGUSGS
Powered by Neogen GenesSeek

CED	-3
BW	5
WW	88
YW	155
Milk	29
\$W	71
\$B	162
\$C	290

BW	Adj WW	Adj. 365	ADG	Scrotal
93	704	1274	3.51	35

12 FR MAN IN BLACK 4529

BD: 03/08/24

Reg #: 21105325

#BAR R JET BLACK 5063
LAR MAN IN BLACK
#JMB MAXINE TG 2131

#BRUNS BLASTER
FR QUEEN DOLLY 9329
DIAMOND J QUEEN DOLLY 6329

#CONNEALY BLACK GRANITE
BAR R IRIS ANITA 0113
#SITZ TOP GAME 561X
#JMB MAXINE DELUXE 9034
#MOGCK BULLSEYE
BALDRIDGE BLACKBIRD 11 BAF
HOOVER EXPLORER
#DIAMOND J QUEEN DOLLY 467

ANGUSGS
Powered by Neogen GenesSeek

CED	-2
BW	4.4
WW	90
YW	152
Milk	37
\$W	85
\$B	163
\$C	285

BW	Adj WW	Adj. 365	ADG	Scrotal
91	718	1264	3.36	37



Lot 13 • FR Man In Black 4725

13 FR MAN IN BLACK 4725

BD: 03/09/24

Reg #: 21105340

#BAR R JET BLACK 5063

#CONNEALY BLACK GRANITE

LAR MAN IN BLACK

BAR R IRIS ANITA 0113

#JMB MAXINE TG 2131

#SITZ TOP GAME 561X

ELLINGSON BOARDWALK 3032

#JMB MAXINE DELUXE 9034

SCHAFF TRADEMARK 7725

#S A V FINAL ANSWER 0035

M A S TRADEMARK 635

#EA PRIDE 346

M A S EXT 3520

P A R MACS CHALLENGE 748

ANGUSCS
Powered by Neogen GeneSeek

CED	6
BW	3.1
WW	75
YW	132
Milk	26
\$W	64
\$B	180
\$C	298

BW	Adj WW	Adj. 365	ADG	Scrotal
92	749	1288	3.32	34

A really long, well-built calf out of a super Ellingson Boardwalk daughter. High carcass trait bull, he carries the Certified Angus Beef logo.



14 FR MAN IN BLACK 8110

BD: 3/18/24

3/4 Angus

SIRE: LAR MAN IN BLACK

MATERNAL SIRE: BRUNS BLASTER

MATERNAL GRANDSIRE: SIMANGUS

BW	Adj WW	Adj. 365	ADG	Scrotal
95	724	1399	4.16	36

A framy ¾ Angus bull out of one of our best Blaster daughters. Over 4-pound ADG.

16 FR MAN IN BLACK 1169

BD: 3/13/24

7/8 Angus

SIRE: LAR MAN IN BLACK

MATERNAL SIRE: SAV PRESIDENT

MATERNAL GRANDSIRE: CONNEALY EARNAN

BW	Adj WW	Adj. 365	ADG	Scrotal
89	723	1343	3.82	36

Really nice bull calf out of a top-notch President daughter with a near perfect udder.

15 FR MAN IN BLACK 1114

BD: 3/08/24

1/2 Angus

SIRE: LAR MAN IN BLACK

MATERNAL SIRE: SIMANGUS

BW	Adj WW	Adj. 365	ADG	Scrotal
88	723	1365	3.96	36

A more moderate birth weight son of Man In Black with a nearly 4-pound ADG out of a really good commercial SimAngus cow.

17 FR MAN IN BLACK 1118

BD: 3/21/24

1/2 Angus

SIRE: LAR MAN IN BLACK

MATERNAL SIRE: SIMANGUS

BW	Adj WW	Adj. 365	ADG	Scrotal
107	771	1347	3.55	33

A really good Man In Black son out of one of our best commercial SimAngus cows. One of the highest WW bulls in the sale at 771 pounds.





Lot 18 • FR Regulator 4467



Summer stops for a photo with FR Regulator 1129

18 FR REGULATOR 4467

BD: 03/17/24

Reg #: 21113558

HOOVER NO DOUBT
FR REGULATOR 1129
FLECK'S BLACK ANNIE 5065

S A V AMERICA 8018
FR MISS AMERICA 0267
IRON MTN ELGA ERICA E267

#MOGCK BULLSEYE
MISS BLACKCAP ELLSTON J2
#BASIN PAYWEIGHT 107S
PINE COULEE BLACK ANNIE U7
#S A V PRESIDENT 6847
S A V MADAME PRIDE 0075
#S A V RESOURCE 1441
IRON MTN ELGA B114

ANGUSGS
Powered by Neogen GeneSeek

CED	6
BW	1.4
WW	65
YW	111
Milk	17
\$W	55
\$B	156
\$C	267

BW	Adj WW	Adj. 365	ADG	Scrotal
90	752	1467	4.41	37

Our Lot 18 bull, Regulator 4467, is the first offering out of our special home-grown herd sire, FR Regulator 1129, who was our top-seller in our 2022 Production Sale, but we now own 100% ownership in. Lot 18 is also the only bull out of a special flush of Regulator to our new powerful donor cow, Miss American 0267. Miss America is also the dam of our super Lot 1 bull. This guy has two flush sisters that are tops in our replacement heifer pen. He is super stout, wide based, and thick from end-to-end. Great footed, large scrotal bull.





Lot 19 • FR Regulator 4160

19 FR REGULATOR 4160

BD: 03/13/24

Reg #: 21102151

HOOVER NO DOUBT

FR REGULATOR 1129

FLECK'S BLACK ANNIE 5065

#MGR TREASURE

FR BEAUTY 9160

IRON MTN BEAUTY E160

#MOGCK BULLSEYE

MISS BLACKCAP ELLSTON J2

#BASIN PAYWEIGHT 107S

PINE COULEE BLACK ANNIE U7

#V A R DISCOVERY 2240

SJH IMPRESSION OF 6108 1614

#S A V TEN SPEED 3022

MEADOW BROOK BEAUTY 216

ANGUS
Powered by Neogen GeneSeek

CED	4
BW	1.9
WW	77
YW	142
Milk	17
\$W	63
\$B	183
\$C	299

BW	Adj WW	Adj. 365	ADG	Scrotal
83	767	1374	3.74	38

A long wide topped son of Regulator that exhibits his sire's depth of body and massive dimensions. Out of our best Treasure daughter.

20 FR REGULATOR 4212

BD: 03/20/24

Reg #: 21102148

HOOVER NO DOUBT

FR REGULATOR 1129

FLECK'S BLACK ANNIE 5065

#S A V RESOURCE 1441

IRON MTN LADY BLANCHE E212

ALC LYN N60S

#MOGCK BULLSEYE

MISS BLACKCAP ELLSTON J2

#BASIN PAYWEIGHT 107S

PINE COULEE BLACK ANNIE U7

RITO 707 OF IDEAL 3407 7075

S A V BLACKCAP MAY 4136

#B/R NEW FRONTIER 095

ALC LYN T03L

ANGUS
Powered by Neogen GeneSeek

CED	6
BW	1.5
WW	63
YW	108
Milk	26
\$W	64
\$B	123
\$C	235

BW	Adj WW	Adj. 365	ADG	Scrotal
81	728	1293	3.49	37

Very moderate birth weight Regulator son with a deep middle and big rump. Out of a stout broody Resource daughter.





Lot 22 - FR Regulator 4331

21 FR REGULATOR 4330

BD: 03/14/24

Reg #: 21102149

HOOVER NO DOUBT
FR REGULATOR 1129
FLECK'S BLACK ANNIE 5065

HOOVER EXPLORER
DIAMOND J QUEEN DOLLY 6329
#DIAMOND J QUEEN DOLLY 467

#MOGCK BULLSEYE
MISS BLACKCAP ELLSTON J2
#BASIN PAYWEIGHT 107S
PINE COULEE BLACK ANNIE U7
#BASIN EXCITEMENT
#QUEEN OF ELLSTON H115
#S A V RESOURCE 1441
DIAMOND J QUEEN DOLLY 112

ANGUS
Powered by Noogen GeneSeek

CED	-10
BW	7.3
WW	88
YW	158
Milk	19
\$W	49
\$B	187
\$C	295

BW	Adj WW	Adj. 365	ADG	Scrotal
89	714	1130	2.57	37

22 FR REGULATOR 4331

BD: 03/14/24

Reg #: 21102150

HOOVER NO DOUBT
FR REGULATOR 1129
FLECK'S BLACK ANNIE 5065

HOOVER EXPLORER
DIAMOND J QUEEN DOLLY 6329
#DIAMOND J QUEEN DOLLY 467

#MOGCK BULLSEYE
MISS BLACKCAP ELLSTON J2
#BASIN PAYWEIGHT 107S
PINE COULEE BLACK ANNIE U7
#BASIN EXCITEMENT
#QUEEN OF ELLSTON H115
#S A V RESOURCE 1441
DIAMOND J QUEEN DOLLY 112

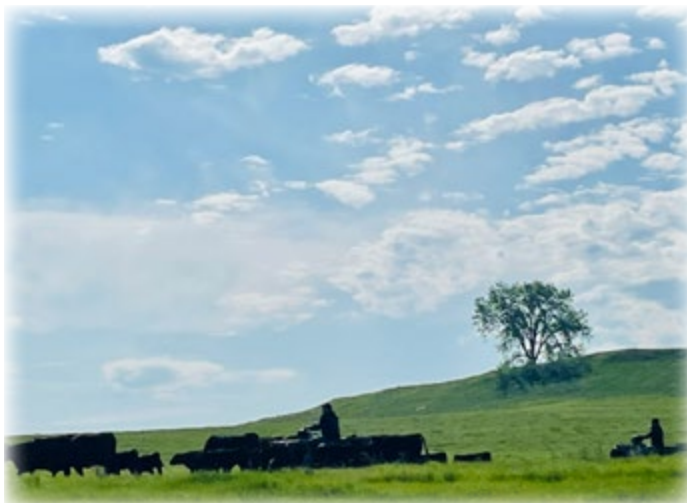
ANGUS
Powered by Noogen GeneSeek

CED	-3
BW	5.2
WW	71
YW	121
Milk	25
\$W	56
\$B	158
\$C	284

BW	Adj WW	Adj. 365	ADG	Scrotal
87	690	1304	3.78	39



Lots 21 and 22 are natural born Regulator twins. Their dam is a fantastic Hoover Explorer daughter, Queen Dolly 6329. She is also the dam to our donor cow, Queen Dolly 9329 and Granddam to lots 10-12 in this year's sale. Lots 21 and 22 are the only natural set of twins we have ever sold in a production sale, and they are both dandies. Deep middled, long, and powerful.



Lots 21 and 22 at birth



Lot 23 - Flecks Dow 5055-4015

23 FLECKS DOW 5055-4015

BD: 03/07/24

Reg #: 21104078

DEER VALLEY GROWTH FUND
JANSSEN DOW JONES 0005
JANSSEN BESSIE HEIRESS 6028

#BASIN PAYWEIGHT 107S
FLECK'S BLACK ANNIE 5055
PINE COULEE BLACK ANNIE U7

#BASIN PAYWEIGHT 1682
DEER VALLEY RITA 36113
#S A V SEEDSTOCK 4838
#S A V BESSIE HEIRESS 3946
#VERMILION PAYWEIGHT J847
BASIN LUCY 3829
#CONNEALY ONWARD
WAR HILL BLACKBONE ANNIE

ANGUSGS
Powered by NeoGen GenesSeek

CED	10
BW	1.5
WW	86
YW	155
Milk	34
SW	87
SB	162
SC	300

BW	Adj WW	Adj. 365	ADG	Scrotal
90	760	1496	4.54	37

Top Adj. YW this year and top ADG at 4.5 pounds. Super thick and deep, as wide as any bull here. We lost this beautiful donor this past year as she was the dam to our great herd sire, Flecks Linebacker. This bull could be a sale-topper.



Janssen Dow Jones 0005 - Sire of Lot 23





Lot 24 • Flecks America 4000

24 FLECK'S AMERICA 4000

BD: 03/07/24

Reg #: 21104067

#S A V PRESIDENT 6847
S A V AMERICA 8018
S A V MADAME PRIDE 0075

#BASIN PAYWEIGHT 107S
FLECK'S BLACK ANNIE 5065
PINE COULEE BLACK ANNIE U7

#COLEMAN CHARLO 0256
S A V BLACKCAP MAY 4136
#S A F 598 BANDO 5175
S A V MADAME PRIDE 8264
#VERMILION PAYWEIGHT J847
BASIN LUCY 3829
#CONNEALY ONWARD
WAR HILL BLACKBONE ANNIE

ANGUSGS
Powered by Neogen GeneSeek

CED	-6
BW	4.9
WW	77
YW	125
Milk	15
\$W	51
\$B	135
\$C	225

BW	Adj WW	Adj. 365	ADG	Scrotal
96	749	1494	4.59	35

A top performance bull by America out of Flecks Black Annie 5065. Should produce excellent females and powerful steer calves. This is the kind of bull that helped us win the ADG bulls at the last North Dakota Angus Bull Test Sale.

25 FLECK'S AMERICA 4001

BD: 03/17/24

Reg #: 21104068

#S A V PRESIDENT 6847
S A V AMERICA 8018
S A V MADAME PRIDE 0075

#BASIN PAYWEIGHT 107S
FLECK'S BLACK ANNIE 5065
PINE COULEE BLACK ANNIE U7

#COLEMAN CHARLO 0256
S A V BLACKCAP MAY 4136
#S A F 598 BANDO 5175
S A V MADAME PRIDE 8264
#VERMILION PAYWEIGHT J847
BASIN LUCY 3829
#CONNEALY ONWARD
WAR HILL BLACKBONE ANNIE

ANGUSGS
Powered by Neogen GeneSeek

CED	-1
BW	4.4
WW	75
YW	121
Milk	11
\$W	46
\$B	117
\$C	205

BW	Adj WW	Adj. 365	ADG	Scrotal
97	644	1251	3.74	36

Another 5065 son by America. A pedigree filled with top genetic dams. Where profit begins is the cow. 5065, U7, 4136, and 0075, what a line-up of Top Angus genetics.



SAV America 8018 • Sire of Lots 24-25





Lot 26 • Flecks Big Days 4004

26 FLECKS BIG DAYS 4004

BD: 03/10/24

Reg #: 21104073

S A V AMERICA 8018
S A V GLORY DAYS 1832
#S A V MADAME PRIDE 3145

#BASIN PAYWEIGHT 107S
FLECK'S BLACK ANNIE 5065
PINE COULEE BLACK ANNIE U7

#S A V PRESIDENT 6847
S A V MADAME PRIDE 0075
#S A V PRIORITY 7283
S A V MADAME PRIDE 1171
#VERMILION PAYWEIGHT J847
BASIN LUCY 3829
#CONNEALY ONWARD
WAR HILL BLACKBONE ANNIE

ANGUS
Powered by Neogen GeneSeek

CED	2
BW	3.5
WW	80
YW	136
Milk	15
\$W	55
\$B	148
\$C	238

BW	Adj WW	Adj. 365	ADG	Scrotal
96	772	1407	3.92	36

27 FLECKS DAYS 4008

BD: 03/09/24

Reg #: 21104076

S A V AMERICA 8018
S A V GLORY DAYS 1832
#S A V MADAME PRIDE 3145

#BASIN PAYWEIGHT 107S
FLECK'S BLACK ANNIE 5065
PINE COULEE BLACK ANNIE U7

#S A V PRESIDENT 6847
S A V MADAME PRIDE 0075
#S A V PRIORITY 7283
S A V MADAME PRIDE 1171
#VERMILION PAYWEIGHT J847
BASIN LUCY 3829
#CONNEALY ONWARD
WAR HILL BLACKBONE ANNIE

ANGUS
Powered by Neogen GeneSeek

CED	0
BW	4.7
WW	90
YW	151
Milk	14
\$W	55
\$B	193
\$C	281

BW	Adj WW	Adj. 365	ADG	Scrotal
97	717	1348	3.88	34

We have four of these flush brothers. All being growth bulls going back to 5065 and Glory Days. 5065 being a top cow in our herd. Glory Days' mama. 3145, is a top-producing cow at Schaff Angus Valley. Buy these four brothers with confidence. These four sons will produce top replacement heifers and heavy steers.

28 FLECKS DAYS 4006

BD: 03/12/24

Reg #: 21104075

S A V AMERICA 8018
S A V GLORY DAYS 1832
#S A V MADAME PRIDE 3145

#BASIN PAYWEIGHT 107S
FLECK'S BLACK ANNIE 5065
PINE COULEE BLACK ANNIE U7

#S A V PRESIDENT 6847
S A V MADAME PRIDE 0075
#S A V PRIORITY 7283
S A V MADAME PRIDE 1171
#VERMILION PAYWEIGHT J847
BASIN LUCY 3829
#CONNEALY ONWARD
WAR HILL BLACKBONE ANNIE

ANGUS
Powered by Neogen GeneSeek

CED	2
BW	3
WW	72
YW	126
Milk	15
\$W	48
\$B	139
\$C	218

BW	Adj WW	Adj. 365	ADG	Scrotal
100	716	1334	3.81	36

29 FLECKS DAYS 4659

BD: 03/14/24

Reg #: 21106681

S A V AMERICA 8018
S A V GLORY DAYS 1832
#S A V MADAME PRIDE 3145

#BASIN PAYWEIGHT 107S
FLECK'S BLACK ANNIE 5065
PINE COULEE BLACK ANNIE U7

#S A V PRESIDENT 6847
S A V MADAME PRIDE 0075
#S A V PRIORITY 7283
S A V MADAME PRIDE 1171
#VERMILION PAYWEIGHT J847
BASIN LUCY 3829
#CONNEALY ONWARD
WAR HILL BLACKBONE ANNIE

ANGUS
Powered by Neogen GeneSeek

CED	1
BW	3.5
WW	77
YW	123
Milk	21
\$W	63
\$B	143
\$C	251

BW	Adj WW	Adj. 365	ADG	Scrotal
98	619	1351	4.51	33



Lot 31 • Flecks Glory Days 4039

31 FLECK'S GLORY DAYS 4039

BD: 3/18/24 • PB Angus

SIRE: SAV GLORY DAYS

MATERNAL SIRE: SAV HARVESTOR

MATERNAL GRANDSIRE: ANGUS

4TH SIRE: ANGUS

BW	Adj WW	Adj. 365	ADG	Scrotal
103	748	1396	4	34

A big, powerful PB Angus bull out of a power cow by Harvester. A top-producing cow.



Lot 33 • FR Scale House 4170

30 FLECK'S GLORY DAYS 4005

BD: 3/6/24 • PB Angus

SIRE: SAV GLORY DAYS

MATERNAL SIRE: SAV HARVESTOR

MATERNAL GRANDSIRE: SAV PROVIDENCE

4TH SIRE: ANGUS

BW	Adj WW	Adj. 365	ADG	Scrotal
86	652	1302	4.01	36

Deep, wide top, big hip, growth bull. Out of an outstanding, broody Harvester daughter. Good bull.

32 FLECK'S GLORY DAYS 4143

BD: 3/14/24 • PB Angus

SIRE: SAV GLORY DAYS

MATERNAL SIRE: ICC PAYRAISE

MATERNAL GRANDSIRE: BR NEW FRONTIER

4TH SIRE: KC PRIME TIME

BW	Adj WW	Adj. 365	ADG	Scrotal
98	754	1363	3.76	38

Another big Purebred Angus bull by Glory Days. The 143-cow family has been top producers in our herd for several generations. Proven power cow family.

33 FR SCALE HOUSE 4170

BD: 03/11/24 • Reg #: 21106631

MARCYS SCALE CRUSHER
S A V SCALE HOUSE 0845
S A V BLACKCAP MAY 1416

FLECK'S LINEBACKER 7051
FR MYRTLE 1170
DIAMOND J MYRTLE 6171

#SITZ UPWARD 307R
#MARCYS ERICA 393
RITO 707 OF IDEAL 3407 7075
S A V BLACKCAP MAY 4136
JINDRA 3RD DIMENSION
FLECK'S BLACK ANNIE 5055
CONNEALY SKIPPER
21AR TRAVELER GIRL 0384A

BW	Adj WW	Adj. 365	ADG	Scrotal
82	665	1316	4.01	35

ANGUSGS
Powered by Neogen GenSeek

CED	6
BW	1.7
WW	76
YW	135
Milk	19
\$W	63
\$B	154
\$C	256

Moderate birth weight Scale House son with really good growth. WW and YW EPD's are top 25% in Angus breed. 4-pound ADG. Out of a moderate framed Linebacker daughter.

34 FR SCALE HOUSE 4229

BD: 03/12/24 • Reg #: 21106630

MARCYS SCALE CRUSHER
S A V SCALE HOUSE 0845
S A V BLACKCAP MAY 1416

S A V AMERICA 8018
FR AMERICAN ANNIE 1229
FLECK'S BLACK ANNIE 5065

#SITZ UPWARD 307R
#MARCYS ERICA 393
RITO 707 OF IDEAL 3407 7075
S A V BLACKCAP MAY 4136
#S A V PRESIDENT 6847
S A V MADAME PRIDE 0075
#BASIN PAYWEIGHT 107S
PINE COULEE BLACK ANNIE U7

BW	Adj WW	Adj. 365	ADG	Scrotal
96	713	1274	3.46	35

ANGUSGS
Powered by Neogen GenSeek

CED	1
BW	3.6
WW	80
YW	139
Milk	24
\$W	68
\$B	149
\$C	254

A more moderate framed Scale House son that is wide based and fancy. Out of a moderate framed America daughter. Top 20% growth EPD's.



35 FR SCALE HOUSE 4724

ANGUS
Powered by Weagen GeneSeek

BD: 03/17/24 • Reg #: 21106737
 MARCYS SCALE CRUSHER
SAV SCALE HOUSE 0845
 S A V BLACKCAP MAY 1416
 #BRUNS BLASTER
FR LANDMARK 0724
 SCHAFF LANDMARK 7724
 #SITZ UPWARD 307R
 #MARCYS ERICA 393
 RITO 707 OF IDEAL 3407 7075
 S A V BLACKCAP MAY 4136
 #MOGCK BULLSEYE
 BALDRIDGE BLACKBIRD 11 BAF
 SCHAFF MUSCLE BUILDER 5515
 M A S 1225 SAUGAHATCHEE 3641

CED	-1
BW	4.5
WW	87
YW	145
Milk	18
\$W	66
\$B	160
\$C	273

BW	Adj WW	Adj. 365	ADG	Scrotal
98	821	1292	2.91	36

A large framed Scale House son out of another one of our fantastic Blaster dams. Top 10% for WW and YW EPD's.

Lot 35 • FR Scale House 4724



Lot 37 • FR Scale House 318525

36 FR SCALE HOUSE 38145

BD: 3/12/24 • 1/2 Angus
SIRE: SAV SCALE HOUSE
MATERNAL SIRE: SIMANGUS

BW	Adj WW	Adj. 365	ADG	Scrotal
68	687	1274	3.62	34

A deep bodied 1/2 Angus son of Scale House. He was a twin to a heifer calf, which is why his birth weight is so low. He will be too powerful to use on heifers. He is out of a powerful 11-year-old SimAngus mother.

37 FR SCALE HOUSE 318525

BD: 3/10/24 • 7/8 Angus
SIRE: SAV SCALE HOUSE
MATERNAL SIRE: CONNEALY FINAL PRODUCT
MATERNAL GRANDSIRE: SAV PROVIDENCE

BW	Adj WW	Adj. 365	ADG	Scrotal
91	851	1406	3.42	37

A super long and powerful 7/8 Angus Scale House son out of a really broody 11-year-old Final Product dam. He tied for 2nd highest WW at 851 pounds!

38

FR SCALE HOUSE 6170

BD: 3/16/24 • 7/8 Angus

SIRE: SAV SCALE HOUSE**MATERNAL SIRE:** HF TIGER**MATERNAL GRANDSIRE:** SAV PROSPERITY

BW	Adj WW	Adj. 365	ADG	Scrotal
92	713	1320	3.74	37

A lot of frame and length in this Scale House son out of a powerful Tiger daughter.



Lot 39 • Flecks American Flg 4011

39

FLECKS AMERICAN FLG 4011

BD: 03/08/24 • Reg #: 21104070

HOOVER NO DOUBT
BALDRIDGE FLAGSTONE F411
BALDRIDGE ISABEL Y69

#BASIN PAYWEIGHT 107S
FLECK'S BLACK ANNIE 5065
PINE COULEE BLACK ANNIE U7

#MOGCK BULLSEYE
MISS BLACKCAP ELLSTON J2
#STYLES UPGRADE J59
BALDRIDGE ISABEL T935
#VERMILION PAYWEIGHT J847
BASIN LUCY 3829
#CONNEALY ONWARD
WAR HILL BLACKBONE ANNIE

BW	Adj WW	Adj. 365	ADG	Scrotal
96	786	1384	3.69	36

ANGUS
Powered by Neogen GenesSeek

CED	0
BW	3.1
WW	78
YW	126
Milk	17
SW	65
SB	165
SC	305

40

FLECKS FLAGSTONE 4009

BD: 03/16/24 • Reg #: 21104072

HOOVER NO DOUBT
BALDRIDGE FLAGSTONE F411
BALDRIDGE ISABEL Y69

#BASIN PAYWEIGHT 107S
FLECK'S BLACK ANNIE 5065
PINE COULEE BLACK ANNIE U7

#MOGCK BULLSEYE
MISS BLACKCAP ELLSTON J2
#STYLES UPGRADE J59
BALDRIDGE ISABEL T935
#VERMILION PAYWEIGHT J847
BASIN LUCY 3829
#CONNEALY ONWARD
WAR HILL BLACKBONE ANNIE

BW	Adj WW	Adj. 365	ADG	Scrotal
91	740	1170	2.65	34

ANGUS
Powered by Neogen GenesSeek

CED	2
BW	2.5
WW	75
YW	120
Milk	18
SW	64
SB	160
SC	283



An outstanding set of Flagstone flush brothers by Black Annie 5065. Deep bodied, thick down their top, big hiped, down into deep rear quarter. Also foot improvers and highly docile. High maternal value bulls in the top-tier of the Angus breed. High carcass value bulls also.





Lot 41 • FR Flagstone 1061

42 FR FLAGSTONE 1092

BD: 3/16/24 • PB Angus
SIRE: BALDRIDGE FLAGSTONE
MATERNAL SIRE: SAV EMBLEM
MATERNAL GRANDSIRE: ICC PAY RAISE
4TH SIRE: SAV HARVESTOR

BW	Adj WW	Adj. 365	ADG	Scrotal
85	663	1301	3.93	34

Another Flagstone son with extra bold rib shape out of a large framed, broody Emblem daughter. Almost 4-pound ADG. $\frac{3}{4}$ brother to Lot 43.



Lot 44 • FR Ease 4112



SAV Ease 0840 • Sire of Lots 44-53

41 FR FLAGSTONE 1061

BD: 3/16/24 • PB Angus
SIRE: BALDRIDGE FLAGSTONE
MATERNAL SIRE: SAV AMERICA
MATERNAL GRANDSIRE: BRUIN UPROAR
4TH SIRE: SAV NET INCOME

BW	Adj WW	Adj. 365	ADG	Scrotal
81	746	1309	3.47	34

A moderate birth weight, deep middled, big butted Flagstone son out of a super Purebred Angus America dam.

43 FR FLAGSTONE 1051

BD: 3/11/24 • 7/8 Angus
SIRE: BALDRIDGE FLAGSTONE
MATERNAL SIRE: SAV EMBLEM
MATERNAL GRANDSIRE: BRUIN UPROAR

BW	Adj WW	Adj. 365	ADG	Scrotal
89	650	1224	3.54	31

A more moderate framed Flagstone calf. He is 7/8 Angus and fancy. He is a $\frac{3}{4}$ brother to Lot 42.

44 FR EASE 4112

BD: 03/18/24 • Reg #: 21105224
 MARCYS SCALE CRUSHER
SAV EASE 0840
 S A V BLACKCAP MAY 1416
 S A V AMERICA 8018
FR BLACK ANNIE 1112
 FR BLACK ANNIE 7120

ANGUS
 Powered by Neogen GeneSeek

CED	3
BW	3.2
WW	74
YW	128
Milk	24
\$W	64
\$B	177
\$C	295

BW	Adj WW	Adj. 365	ADG	Scrotal
89	689	1254	3.49	37

A compact Ease son with true Angus bull character. Would use this guy on cows only for modest birth weights and to add some maternal qualities in your females, with America on the bottom-side of his pedigree. Larger scrotal Ease son. $\frac{3}{4}$ brother to Lot 45.

45 FR EASE 4113

BD: 03/19/24 • Reg #: 21105223
 MARCYS SCALE CRUSHER
SAV EASE 0840
 S A V BLACKCAP MAY 1416
 S A V AMERICA 8018
FR BLACKCAP 1113
 FR BLACKCAP 6113

ANGUS
 Powered by Neogen GeneSeek

CED	9
BW	0.3
WW	63
YW	111
Milk	27
\$W	66
\$B	119
\$C	221

BW	Adj WW	Adj. 365	ADG	Scrotal
83	667	1203	3.31	34

This is Pine's calf. He is a fancy, moderate framed devil. Really good footed. Highly maternal guy who also has the world record selling SAV America on the bottom side of his pedigree. Recommended for heifers. $\frac{3}{4}$ brother to Lot 44.

46 FR EASE 4161

BD: 03/01/24

Reg #: 21105221

MARCYS SCALE CRUSHER
S A V EASE 0840
S A V BLACKCAP MAY 1416

ELLINGSON RIDER PRIDE 7282
FR BEAUTY 2160
FR BEAUTY 9160

#SITZ UPWARD 307R
#MARCYS ERICA 393
RITO 707 OF IDEAL 3407 7075
S A V BLACKCAP MAY 4136
#ELLINGSON ROUGHRIDER 4202
EA QUEEN DOLLY 3246
#MGR TREASURE
IRON MTN BEAUTY E160

ANGUS
Powered by Neogen GeneSeek

CED	6
BW	0.9
WW	65
YW	115
Milk	26
\$W	67
\$B	125
SC	240

BW	Adj WW	Adj. 365	ADG	Scrotal
66	611	1137	3.24	34

A really nice Ease calf out of a highly maternal Ellingson Rider Pride dam. Top 20% in the Angus breed for maternal value at +78. Recommended for heifers.



Lot 48 • FR Ease 2126

47 FR EASE 4180

BD: 02/19/24

Reg #: 21105220

MARCYS SCALE CRUSHER
S A V EASE 0840
S A V BLACKCAP MAY 1416

FLECK'S LINEBACKER 7051
FR BEAUTY 2180
IRON MTN BEAUTY E180

#SITZ UPWARD 307R
#MARCYS ERICA 393
RITO 707 OF IDEAL 3407 7075
S A V BLACKCAP MAY 4136
JINDRA 3RD DIMENSION
FLECK'S BLACK ANNIE 5055
#S A V TEN SPEED 3022
MEADOW BROOK BEAUTY 216

ANGUS
Powered by Neogen GeneSeek

CED	8
BW	0.4
WW	77
YW	136
Milk	15
\$W	63
\$B	152
SC	252

BW	Adj WW	Adj. 365	ADG	Scrotal
57	674	1096	2.97	32

A sleep all night heifer bull. Moderate framed, smooth in his design. 57-pound birth weight with some good growth.

48 FR EASE 2126

BD: 3/1/24

7/8 Angus

SIRE: SAV EASE

MATERNAL SIRE: SAV NORTH FACE

MATERNAL GRANDSIRE: JINDRA DOUBLE VISION

BW	Adj WW	Adj. 365	ADG	Scrotal
87	657	1354	4.3	33

A powerful Ease son. Biggest framed Ease son in the sale, stemming from his powerful North Face dam. Should produce long, scale-crushing calves. Recommend for cows. Over 4-pound ADG.

49 FR EASE 2115

BD: 3/6/24

PB Angus

SIRE: SAV EASE

MATERNAL SIRE: SCHIEFELBEIN SHOWMAN

MATERNAL GRANDSIRE: BALDRIDGE TITAN

4TH SIRE: RB TOUR OF DUTY

BW	Adj WW	Adj. 365	ADG	Scrotal
80	692	1356	4.09	36

Several generations of calving ease built into this guy with Ease, Showman, and Titan in his pedigree. Super stylish calf out of one of our best Showman daughters. Recommend on bigger heifers or cows.

50 FR EASE 2112

BD: 2/24/24

7/8 Angus

SIRE: SAV EASE

MATERNAL SIRE: SAV AMERICA

MATERNAL GRANDSIRE: HF TIGER

BW	Adj WW	Adj. 365	ADG	Scrotal
83	667	1199	3.28	37

Smooth shouldered, long Ease son with maternal in his background with America in his pedigree. $\frac{3}{4}$ brother to Lots 44 and 45. Recommend on bigger heifers or cows.

51 FR EASE 2129

BD: 2/28/24 • 7/8 Angus

SIRE: SAV EASE

MATERNAL SIRE: SCHIEFELBEIN SHOWMAN

MATERNAL GRANDSIRE: CONNEALY EARNAN

BW	Adj WW	Adj. 365	ADG	Scrotal
69	619	1158	3.32	34

Another really stylish Ease x Showman mating. Double bred for calving ease. Recommend for heifers.

53 FR EASE 2169

BD: 2/24/24 • 1/2 Angus

SIRE: SAV EASE

MATERNAL SIRE: SIMANGUS

BW	Adj WW	Adj. 365	ADG	Scrotal
73	614	1232	3.77	32

Recommended for heifers. A nice 1/2 Angus Ease son with a small head and smooth shoulders. Calving ease with growth in this guy. Out of a really good commercial SimAngus young cow.

52 FR EASE 2174

BD: 2/25/24 • PB Angus

SIRE: SAV EASE

MATERNAL SIRE: FLECKS LINEBACKER

MATERNAL GRANDSIRE: HF TIGER

4TH SIRE: CONNEALY FINAL PRODUCT

BW	Adj WW	Adj. 365	ADG	Scrotal
79	660	1147	3	33

Very long, smooth calving ease prospect. A purebred Ease son out of a Flecks Linebacker dam with a great udder. Recommend for larger heifers or cows.

54 FLECKS RR 2955-4950

BD: 03/30/24 • Reg #: 21104081

SITZ RESILIENT 10208

RIDL RESILIENT 2146

RIDL ERICA 543

SCHIEFELBEIN SHOWMAN 338

FLECKS BLACK ANNIE SH 2955

FLECKS BLK ANNIE PRES 9055

#SITZ STELLAR 726D

SITZ MISS BURGESS 1856

#MOGCK WHISPERING WIND 48

#RIDL ERICA 229

SCHIEFELBEIN ATTRACTIVE 4565

FROSTY ELBA 3745

#S A V PRESIDENT 6847

FLECK'S BLACK ANNIE 5055

BW	Adj WW	Adj. 365	ADG	Scrotal
80	705	1307	3.72	36

ANGUS
Powered by Moogen GeneSeek

CED	-7
BW	5.9
WW	102
YW	160
Milk	29
\$W	84
\$B	157
\$C	259

A Resilient son out of an outstanding Showman daughter out of Flecks Black Annie President 9055. This Showman daughter is destined to make the donor pen. Best female out of our 9055 cow.

55 FLECKS THUNDER 4412

BD: 3/30/24 • PB Angus

SIRE: FR THUNDERSTRUCK

MATERNAL SIRE: HA COWBOY UP

MATERNAL GRANDSIRE: SAV 004

4TH SIRE: ANGUS

BW	Adj WW	Adj. 365	ADG	Scrotal
90	815	1325	3.09	39

Powerful bull. A top WW bull. If you need calves to push the scale down, look no further, this is your guy. Pounds pay.

56 FLECKS REM 7007-4007

BD: 04/12/24 • Reg #: 21104060

#S A V RESOURCE 1441

G A REMEDY 250

#G A COQUETTE 564

#S A V INTERNATIONAL 2020

FLECKS BLACK ANNIE U7 INT 70

PINE COULEE BLACK ANNIE U7

RITO 707 OF IDEAL 3407 7075

S A V BLACKCAP MAY 4136

G A MONTANA 216

GA COQUETTE 307

#S A V HARVESTOR 0338

#S A V EMBLYNETTE 5483

#CONNEALY ONWARD

WAR HILL BLACKBONE ANNIE

BW	Adj WW	Adj. 365	ADG	Scrotal
89	759	1228	2.89	38

ANGUS
Powered by Moogen GeneSeek

CED	0
BW	4
WW	84
YW	139
Milk	25
\$W	70
\$B	147
\$C	262

Only the second bull we have gotten out of 7007, and he is a dandy. His mama is an International out of the great Pine Coulee Black Annie U7. The sire to this bull was the top selling bull at Glasoe Angus in 2023, going back to Resource. A really good, younger bull.








Semen available • Contact us today!
FR REGULATOR 1129
 Semen: \$30 • Certificates \$40
 Order through Fleck Ranch for the
 2025 Breeding Season
 Aaron • (701) 391-3557

Regulator is our own home raised sire that is currently having his semen collected at World West Sires in Joliet, Montana. He is a No Doubt son out of our superstar donor dam, Black Annie 5065. Regulator is a true beef bull with tremendous volume and length. He is a very good footed, large scrotal bull. It is really hard to find a bull with his amount of muscle and mass that is also a high-quality carcass bull. He carries the Certified Angus Beef stamp for carcass quality. He is also super docile. We hope to have him back for sale day for people to look at, as we will be selling semen from him this year and will have several offspring of him in next year's production sale.



ABOVE AVERAGE GOALS REQUIRE TARGETED BULLS


Aim High

The Targeting the Brand™ logo highlights registered Angus bulls with greater genetic potential to produce calves that meet the most challenging specifications of the *Certified Angus Beef®* brand.

Only 1 in 4 non-parent Angus bulls qualify.

Minimum Genetic Requirements

Marbling EPD (Marb)	+0.65
Dollar Grid Carcass Index (\$G)	+55.0



For more information on Targeting the Brand™ visit CABcattle.com.

Fleck

Ranch

Dated material: Please deliver immediately.

**Les & Joyce Fleck
6180 Hwy 6
Solen, ND 58570**

Fleck

Ranch

**Feb. 13, 2025 • 2 p.m. CST
At the Ranch • Solen, ND**

selling
56

Angus & SimAngus™ Bulls
*All A.I. sired by Angus genetics and
raised without creep feed!*



Lot 1 • FR Tuxedo 4367



Lot 26 • Flecks Big Days 4004